

LONDINIUM 1

Replacing 20Amp pressure switch with 30Amp pressure Switch – 110V 1.4kW Machines only

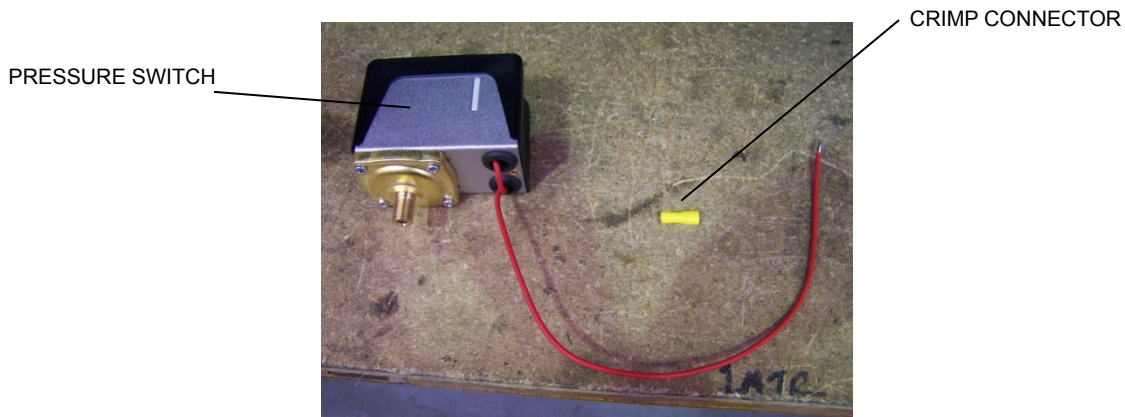
These instructions are to show how to replace the standard 20Amp pressure with the 30Amp pressure switch on Londinium 1 rated 110V, 1.4Kw.

Ensure you read and understand the instructions before attempting to modify your machine, if in doubt contact Londinium Espresso and/or a suitably qualified electrical technician/engineer.

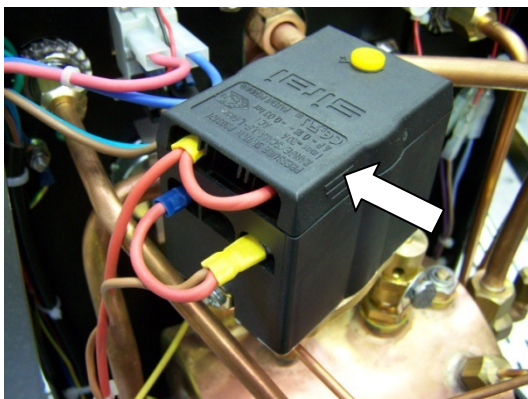
Before removing any body panels or performing any work on the machine the following 3 points must be followed:

1. Ensure the machine is completely isolated from the mains power supply by removing the mains power cord from the wall socket.
2. Ensure the machine has been turned off and allowed to cool for a minimum of 1 hour
3. Ensure the boiler has been fully de-pressurised by opening the steam valve.

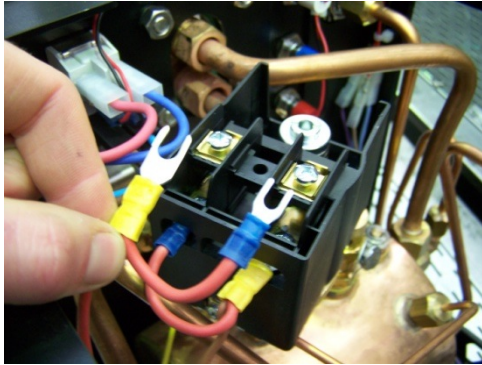
The Conversion Kit



1. Remove the body panels, as described in the user manual, updated manuals are available from Londinium Espresso.
2. Locate the pressure switch – large black box on top of the boiler with red and brown cables coming out.
3. Remove the top of the pressure switch, by squeezing the two grips on the side and top of the switch and lifting the top off.

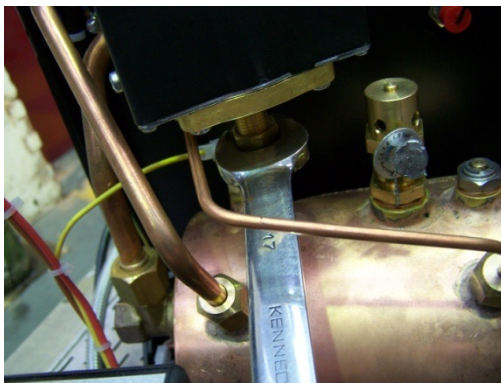


- Using a Philips head screwdriver, loosen the two top terminal screws (there is no need to remove the screws completely) and pull the cables out of the terminals.

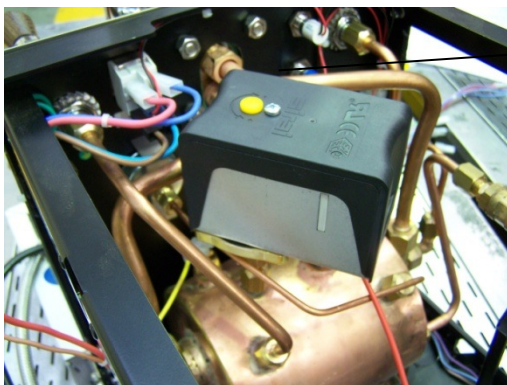


- Repeat for the lower terminals

- Using a 17mm spanner, remove the pressure switch by loosening the upper nut on the fitting under the pressure switch, it is recommended a second 17mm spanner is used to hold the lower nut whilst unscrewing the upper nut.



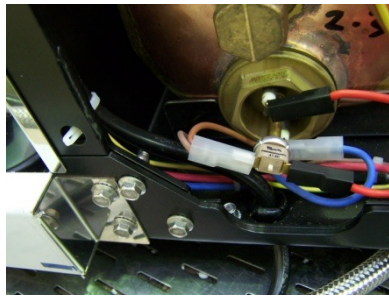
- Take the new pressure switch and fit to the same fitting as the old pressure switch, orientate the pressure switch as shown below. To remove the plastic top unscrew the screw at the top as indicated below



Screw

- Locate the high limit safety thermostat, which is connected to the element on the side of the boiler, pull the brown wire from the terminal on the high limit safety thermostat

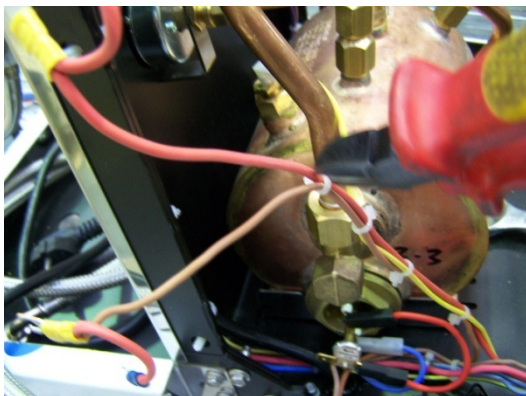
High Limit Safety
Thermostat



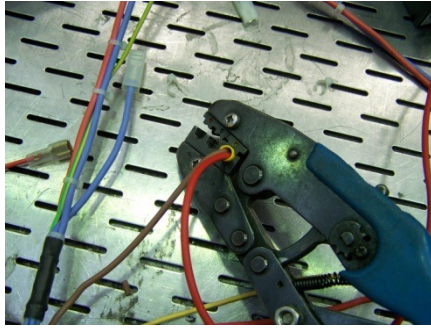
9. Using wire cutters, cut the white terminal from the Brown wires



10. The brown wire that was originally connected to the pressure switch now needs to be removed, carefully cut the white cable ties that hold the brown wire in place, taking care not to damage any other wires, once remove dispose of responsibly.



11. Take the red wire that comes from the new pressure switch and route towards the remaining brown wire that was connected to the high limit safety thermostat. Strip 5-7mm of the outer insulation from the brown wire, twist the bare ends of the brown wire and red wire then use the yellow crimp connector to connect the two wires together. **It is highly recommended that crimping pliers are used to connect the yellow crimp.**

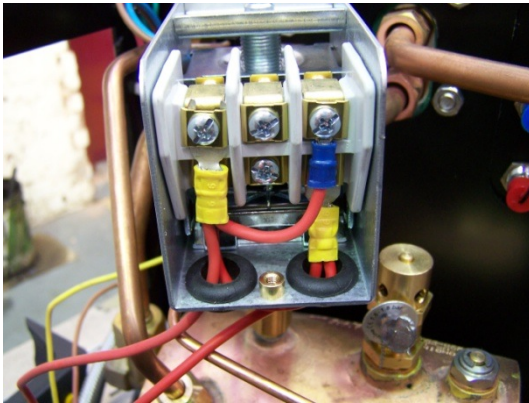


12. Push the yellow crimp on to the terminal on the high limit safety thermostat.

13. Feed the red wire, that has the yellow and blue fork terminal, through one of the holes on the underside of the pressure switch, as shown below.



14. Loosen – do not remove - the left and right terminal screws, on the top bank of terminals and feed the fork terminals UNDER the brass plate, tighten the screws to secure the terminals. Wire the pressure switch as shown below – note the yellow and blue terminals are diagonally opposite.



15. Fit the plastic top to the pressure switch and secure with the screw.
16. Replace body panels and turn the machine on as normal, take note of the boiler pressure as indicated on the pressure gauge, the pressure should be set to 1.2Bar. if the pressure needs to be adjusted remove the top panel, remove the yellow plug on top of the pressure switch insert a flat head screwdriver in to the hole and turn the screw anti-clockwise to increase the pressure and clockwise to reduce the pressure.